

# e-Series Modular Chiller / Heat Pump Range

## Frequently Asked Questions

**Q1**

### Can the e-Series Reversible Heat Pump range provide simultaneous heating and cooling?

The e-Series is a 2-pipe unit and available in Cooling Only or Reversible Heat Pump models, and is not able to produce simultaneous heating and cooling. However, [please enquire here](#) about our 4-pipe simultaneous heating and cooling chiller options available from our European factory and a BDT Sales Engineer will be in contact.

**Q2**

### Would the e-Series be suitable for using a bank to provide both heating and cooling water?

As 2-pipe units, each module can only either cool or heat. However, any number of modules could be connected to a chilled water header and a heating water header. Third party controls and control valves would be required to change the units from heating and cooling. Please watch the [Technical Module recording](#) to learn more.

**Q3**

### How does an e-Series Chiller System overcome short cycling times in low load conditions?

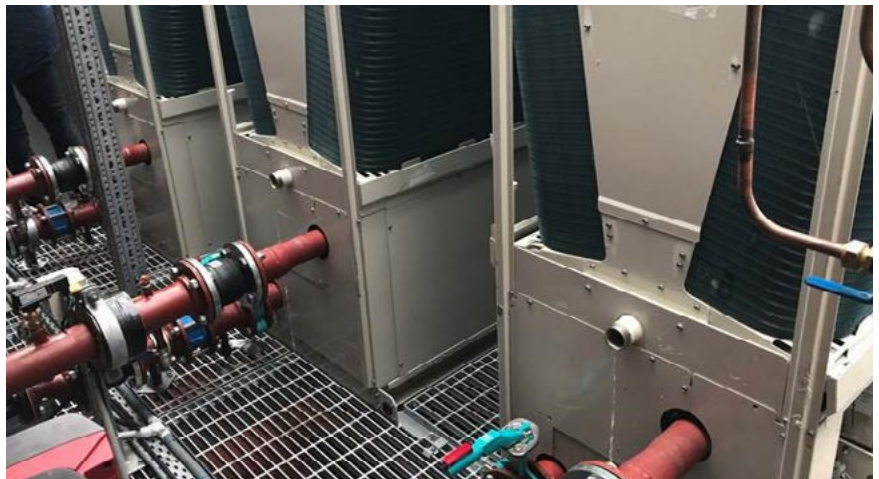
The e-Series units feature inverter compressors that help with low load conditions. The inbuilt control logic has short cycling protection with minimum on and off times. Minimum recommended system volumes should always be respected. These can be found in the [Databook](#).



**Q4** When the modules are connected side-by-side, is there sufficient space between each module for routine servicing and maintenance or replacement of parts in future?

There is suitable service space between each e-Series units when they are stacked together as long as the service space is kept clear of any obstructions such as cables and pipes and that the serviceman is cautious not to damage the overhead coils (such as bumping with a hardhat).

The service space is also sufficient for major works including compressor replacements.



**Q5** Do e-Series Chiller systems require a buffer tank for minimum load operation?

If the primary system volume is insufficient a third party buffer tank will need to be installed in the circuit to provide system volume and stabilise the return water temperature to the unit. There are minimum water volume requirements for each unit available in the [Databook](#) or in our [Technical Module recording](#).

**Q6** Do e-Series Chiller systems have inbuilt hydronic kits such as inbuilt pump and expansion vessel?

No, the e-Series range does not include options for inbuilt hydronic kits. Buffer tanks, expansion vessels and pumps will need to be supplied separately.